

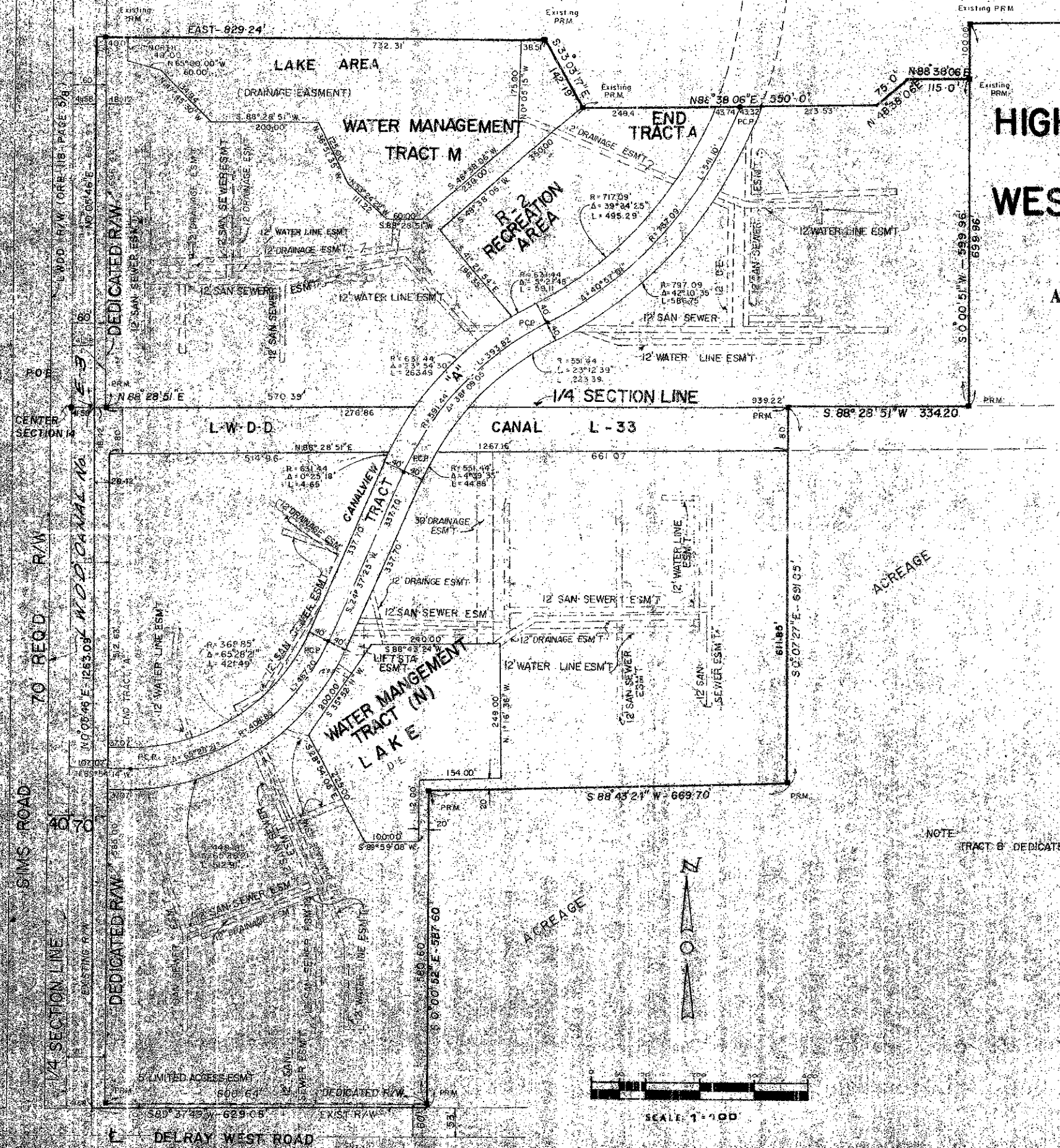
40-115

HIGH POINT OF DELRAY WEST PLAT NO. 1  
PB. 38, Pg. 128-129

PART OF  
A PLANNED UNIT DEVELOPMENT  
**HIGH POINT OF DELRAY  
WEST - PLAT NO. 2**

A PART OF SECTION 14 T46S, R42E  
PALM BEACH COUNTY FLORIDA

SHEET 2 OF 2



NOTE:  
TRACT B DEDICATED FOR U.E. B.D.E.



SCALE: 1"=40'

0254-302

0254-302

High Point of Delray W  
#2

40/115

ENVIRONMENTAL ENGINEERING GROUP  
CONSULTING AND ENVIRONMENTAL ENGINEERS  
DELRAY BEACH, FLORIDA

